



ZLIN AIRCRAFT a.s.
Letiště 1578, 765 81 Otrokovice,
Czech Republic
e-mail: zlin-service@zlinaircraft.eu
<http://www.zlinaircraft.eu>

MANDATORY

**SERVICE
BULLETIN**

MANDATORY SERVICE BULLETIN Z 242/21a

1. MODELS AFFECTED: All Z 242L aircraft up to S/N 0696 inc. and from S/N 0700 up to 0703 inc.
2. SUBJECT: Occurance of the elevator fairings damage in operation.
3. CORRECTION:
 - 3.1 Modify the elevator.
 - 3.2 Enter the procedures for execution of the tail slides into the Flight Manual. On this occasion the Manufacturer has carried out any other small modifications of the Flight Manual.
4. TIME OF COMPLIANCE: Correction 3.1:
In case of the elevator damaged - simultaneously with its repair; otherwise at the nearest 100-hour Inspection.

Correction 3.2:
Immediately after this Bulletin receipt.
5. CORRECTION PERFORMED BY: The Aircraft Operator; the works connected with the Correction 3.1 will performed by the Authorized organization.
6. EXPENSES COVERED BY: The material and the parts necessary for the elevator modification - the Aircraft Manufacturer;
the work including the paint renewal - the Aircraft Operator.
7. PROCEDURE:
 - 7.1 a) Remove the tip arches.
 - b) According to the Enclosure Fig.No. 1 drill off the rivets in the trailing edge up to the piano-hinge of the trim tab and the balance tab from the elevator L.H. side as well as R.H. side.
Dismount screws (Item 3), nuts (Item 4) and washers (Item 5) at the dischargers and remove the trailing-edge stiffening pieces (Item 1 and 2).

c) According to the Enclosure Fig.No.2 insert the stiffener L.H. (Item 7) and the stiffener R.H. (Item 8) into the elevator trailing edge from the elevator L.H. side as well as from the elevator R.H. side, drill the holes for rivets and rivet them on. Drill the holes for screws of dischargers and re-mount screws (Item 3), nuts (Item 4) and washers (Item 5).

d) Renew the paint and install the tip arches.

7.2 Replace appropriate old pages of the Z 242 L Flight Manual by the new one dated April 30, 1996 and enter the revision into the Log of Revisions:

a) Czech version:0-5,1-4,4-23,4-27,4-29,5-4

b) English version:0-5,1-4,4-27,4-32,4-36

c) English version Doc.No.003.012:

0-1,0-5,0-6,1-4a,1-5,1-6,2-17,4-25,4-26,
4-28,4-29,4-32,5-4.

8. NECESSARY MATERIAL: Enclosed to the Bulletin and delivered by the manufacturer:

- 8.1 1 pc of stiffener L.H. (Item 7)
1 pc of stiffener R.H. (Item 8)
2 pc of nut M4 LDN 3233 (Item 4)
12 pcs of rivet 2.6x6 ČSN 02 2304.00
26 pcs of rivets 2.6x7 ČSN 02 2304.00
8.2 New pages of the Z 242L Flight Manual
(see Subsection 7.2)

9. THIS BULLETIN IS EFFECTIVE FROM THE DATE OF APPROVAL BY THE CIVIL AVIATION INSPECTORATE.

10. ENCLOSURES: 10.1 Figure No. 1
Figure No. 2
10.2 Necessary material
(see Subsection 8.1 and 8.2)


Ing. František Tížek

.....
Manufacturer's
Representative

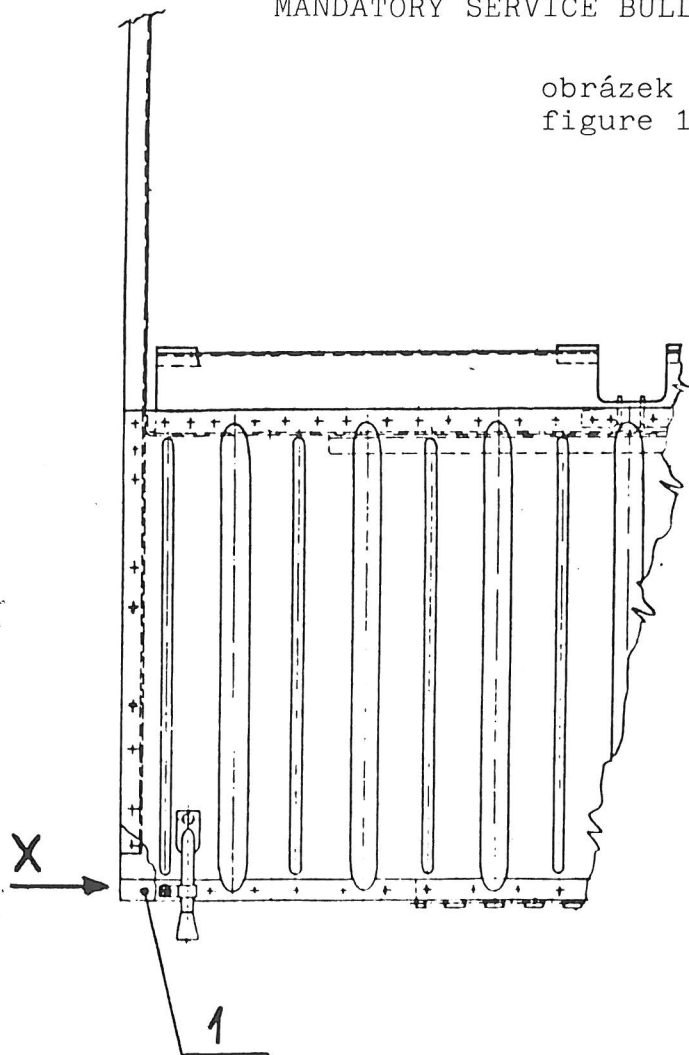

Ing. Milan Vyhnálek

.....
CAI Representative

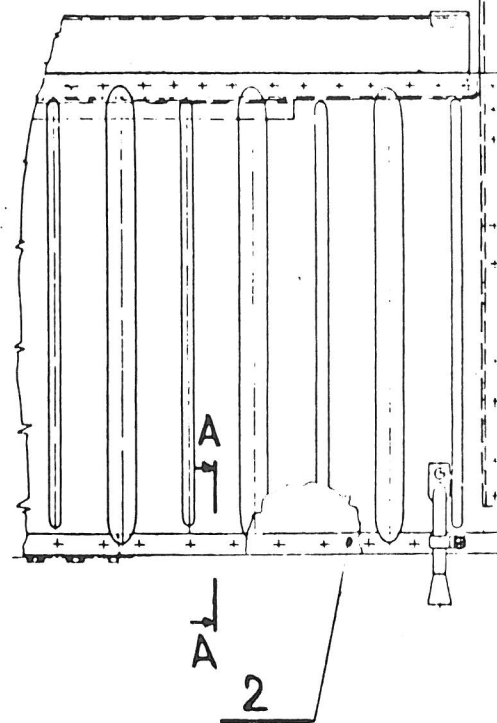
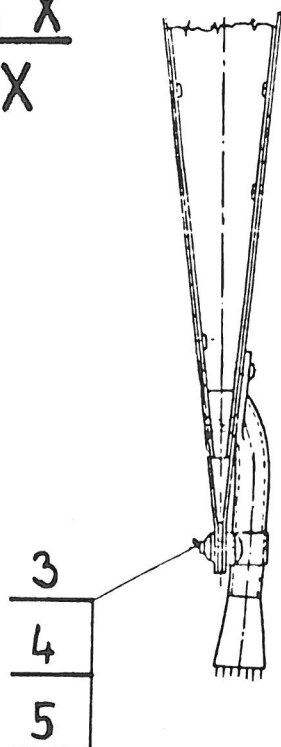
May 23, 1996
.....
Date of approval by the CAI

CONTACT ADDRESS: ZLIN AIRCRAFT a.s.
ZLIN Service
765 81 OTROKOVICE
CZECH REPUBLIC

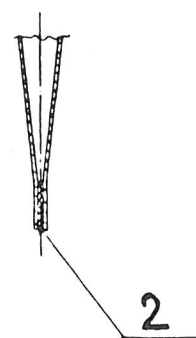
obrázek 1
figure 1



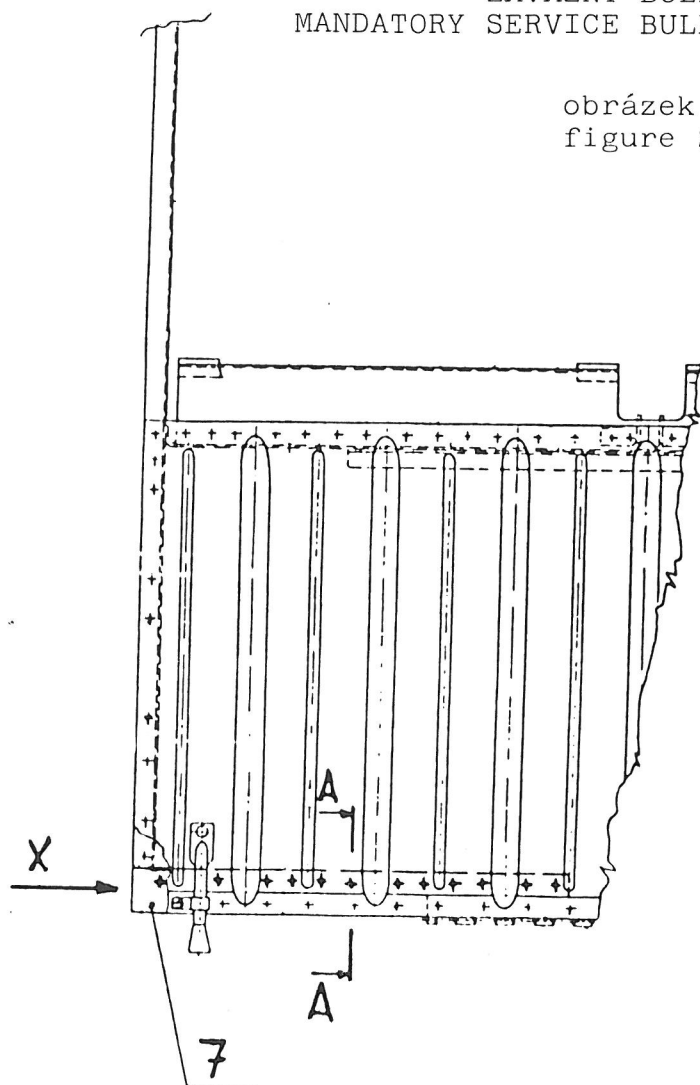
Pohled X
View X



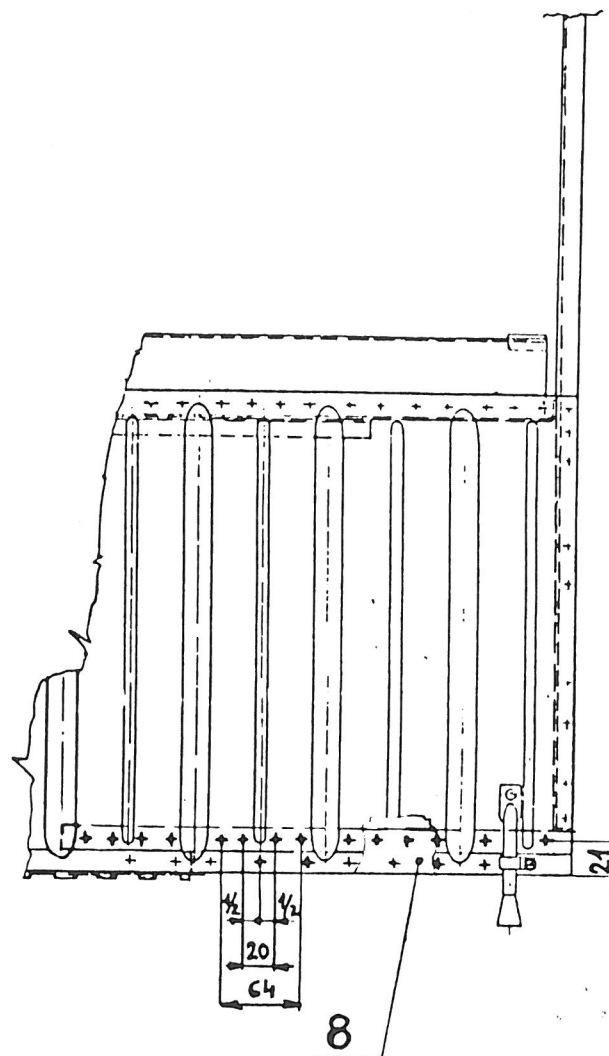
Řez A-A
Sectional View A-A



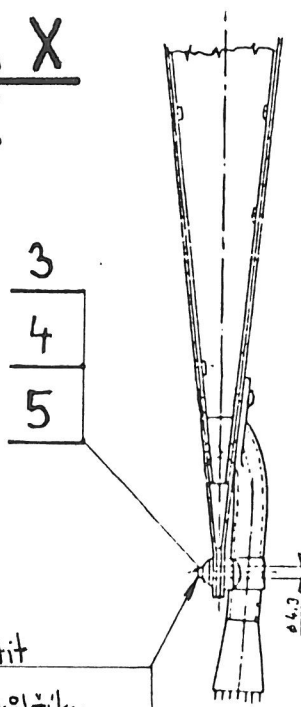
obrázek 2
figure 2



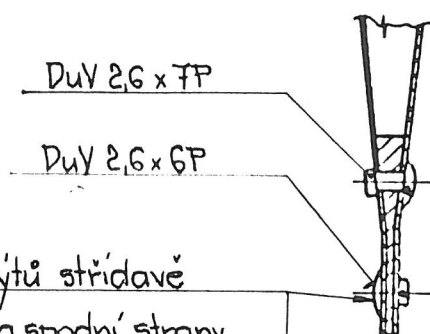
Pohled X
View X



Řez A-A
Sectional View A-A



Matici poz. 4 pojistit
po obvodě třemi důlčiky
Lock the nut (Item 4) on the
periphery with three centre punches



Hlavy nýtů střídavě
z horní a spodní strany
Rivet heads staggered
from the top as well as
from the bottom side